



ARTHROWAND® SELECTION CHART



Meniscectomy	Lateral Release	ACL/PCL Debridement (Microplasty)	Articular Cartilage Debridement (Chondroplasty)	Synovectomy/Plica Removal	Tendon Debridement	Ligament/Tendon Coagulation	Subacromial Decompression	Frozen Shoulder Release	Capsular/Ligament/Tendon Coagulation	Labral Tear Resection	Tendon Debridement	Articular Cartilage Debridement (Chondroplasty)	TFC-Wrist	Tendon Debridement	Articular Cartilage Debridement (Chondroplasty)	Ligament/Tendon Coagulation	Articular Cartilage Debridement (Chondroplasty)	Synovectomy/Plica Removal
--------------	-----------------	--------------------------------------	--	---------------------------	--------------------	-----------------------------	---------------------------	-------------------------	--------------------------------------	-----------------------	--------------------	--	-----------	--------------------	--	-----------------------------	--	---------------------------

RECOMMENDED SETTINGS							6-8	7-9	4-9	6-8	7-9	4-6	5-7	6-9	4	1-2	7-9	6-8	1-2	7-9	5	4-6	5-7	4	4-6	1-2	4-6	6-9		
							KNEE									SHOULDER					WRIST/ELBOW/ANKLE			HIP						
	Catalog No.	ICW ¹	Name	Shaft Size	Angle	5.5mm ² Cannulas																								
Suction ArthroWand	AS 1335-01	ASC 1335-01	TurboVac® 90	3.5mm	90°	X					■						■	■		■		■								
	AS 1337-01		TurboVac® HP	3.5mm	90°												■					■								
	AS 2530-01	ASC 2530-01	CoVac® 50	3.0mm	50°		■							■																
	AS 3730-01		CoVac® 70	3.0mm	70°		■							■																
	AS 4630-01	ASC 4630-01	TriStar® 50	3.0mm	50°		■				■			■																
	AS 4730-01		MultiVac™ XL	3.0mm	50°	X																							■	■
	AS 6840-01		Titan®	4.0mm	80°	X									■															
Meniscus ArthroWand	AS 1340-01		DiamondVac™	3.5mm	90°	X					■			■		■			■		■									
	AS 5500-01	ASC 5500-01	MeniVac™	3.0mm	45°	X		■																						
Right Angle ArthroWand	A 5520-01	AC 5520-01	Razor2.5	2.5mm	45°	X			■																					
	A 1325-01		Right Angle 90	2.5mm	90°							■																		
	A 1335-01	AC 1340-01	Right Angle 90	3.5mm	90°						■			■		■			■		■									
	A 1336-01		LoPro™	3.6mm	90°	X					■			■		■			■		■									
Bevel ArthroWand	A 1345-01	AC 1345-01	Eliminator™	4.5mm	90°	X					■			■		■			■		■									
	A 2630-01		Bevel 30	3.0mm	30°	X	■																							
	A 2430-01		Bevel 45	3.0mm	45°	X	■			■										■										
Dome ArthroWand	A 2530-01		Bevel 60	3.0mm	60°		■			■				■																
	A 3625-01		Dome 30	2.5mm	30°	X	■																							
	A 3525-01		Dome 60	2.5mm	60°		■																							
CAPS® & CAPsure ArthroWand	A 3530-01		Dome 60	3.0mm	60°					■																				
	A 1730-01		CAPSure®	3.0mm	0°	X									■				■											
	A 1830-01	AC 1830-01	CAPSure® 30	3.0mm	30°	X									■				■											
Small Joint ArthroWand	A 1720-01		MicroCAPS	2.0mm	0°	X									■												■			
	A 2723-01		Short Bevel	2.3mm	25°																	■			■					
	A 2823-01		Short Bevel	2.3mm	35°																	■			■					
	A 4050-01		Microblator™ 30	1.4mm	30°																	■			■					
Specialty ArthroWand	A 4040-01		TOPAZ™	0.8mm	0°										■															
	A 4045-01		TOPAZ™ XL	0.8mm	15°																■									
	A 4330-01	AC 4330-01	Saber™	3.0mm	30°						■								■											
	A 4300-01		Straight Saber™	3.5mm	0°	X					■								■											
	N/A	AC 5530-01	Paragon™	2.3mm	15°																									
FOR ATLAS SYSTEM ONLY	N/A	ASC 5000-01*	UltraVac™	4.25mm	90°						■																			

¹ Integrated Cable Wands (ICW) ■ Recommended
² Fits through most 5.5mm cannulas ✎ For use with Bending Tool (H 2000-20)
 * For Atlas System use only ○ Not Recommended for Ankle or Wrist use

NOTE: The information on this chart is intended as a guideline and suggestion. Surgeons should use their best medical judgement when selecting an ArthroCare ArthroWand for a patient and procedure.

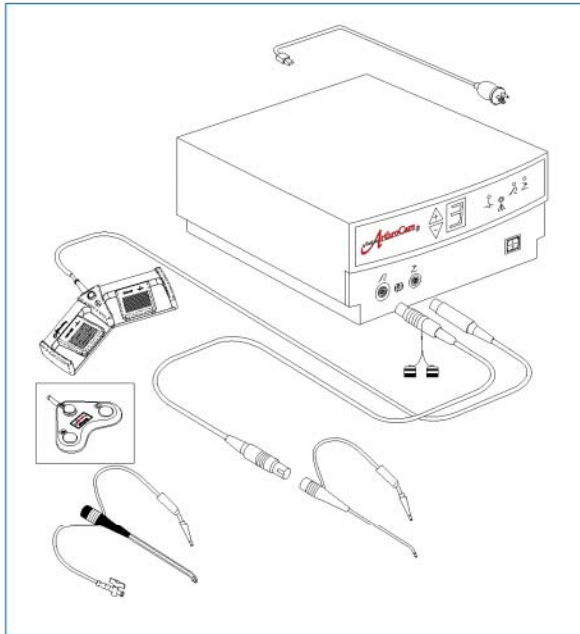


ArthroCare SportsMedicine
 680 Vaqueros Avenue
 Sunnyvale, CA 94085-3523
 toll-free 800-797-6520
 phone 408-736-0224
 fax 408-736-0226
 www.arthrocare.com

ArthroCare Europe AB
 Baggensgatan 25
 SE 111 31 Stockholm
 Sweden
 phone +46 8 546 172 00
 fax +46 8 546 172 39
 info@arthrocare.se

CAUTION: Federal (USA) law restricts this device to sale by or on the order of a physician.
 ©2003 ArthroCare Corporation. ArthroCare, ArthroWand, CAPS, CAPsure, TurboVac, TriStar, CoVac, LoPro, MultiVac, DiamondVac, Saber, Titan, TOPAZ, Microblator, Eliminator, MeniVac, UltraVac and Paragon are trademarks and/or registered trademarks of ArthroCare Corporation.

System Preparation and Care



System Preparation

Prior to each use, inspect System for possible damage to casing and cables.

- 1 Insert the receptacle end of the power cord into the Power Cord Receptacle located at the rear of the Controller. Insert the plug end of the power cord into an appropriately grounded electrical outlet. Position the Controller so that the exhaust fan located in the rear of the Controller is unobstructed and directed away from the patient.
- 2 Press the Controller power switch to activate the System.
- 3 Connect the Foot Control to the Foot Control Receptacle on the front of the Controller. The Foot Control Connected Indicator light (green) on the front of the Controller will illuminate.
- 4 Make sure the Cable connectors are completely dry before use. Plug the end of the Cable into the Cable Receptacle on the front of the Controller.
- 5 Refer to the *Wand Instructions for Use* for guidance on the suggested use of each Wand.

Wand Selection

Select the Wand size and tip angle most appropriate for the procedure. Larger Wands are capable of higher ablation rates but may have more limited access to tight locations. The Controller will preset a maximum voltage for each Wand style to ensure safe and effective operation. In order to adjust the voltage setting, the Wand and Cable must be connected to the Controller.

System Shut Down

- 1 Turn the power switch to the "OFF" position; all lights on the Controller will go off.
- 2 Remove the Wand from the Cable and disconnect the Cable from the Controller.
- 3 Dispose of the Wand and prepare the Cable for sterilization.



Timer Setup

- 1 Connect power cord to Controller and outlet.
- 2 Connect Timer to Controller.
- 3 Connect Foot Control to Timer.
- 4 Connect Patient Cable to Controller, aligning dots on Cable and Controller.
- 5 Connect Patient Cable to device, aligning dots on Cable and device.

Cleaning and Sterilization for Patient Cable

Controller **DO NOT** sterilize or immerse in liquid. Wipe clean with a soft cloth and mild detergent as needed.

Foot Control **DO NOT** sterilize. Clean with detergents and disinfectant according to standard practices. Disinfect with liquid chemical disinfectant such as chlorine solutions, iodophors, glutaraldehydes and hydrogen peroxides. Follow manufacturer guidelines for concentration and length of exposure.

Wand The Wand is supplied sterile. The Wand is intended for single use only. **DO NOT** clean, resterilize or reuse.

Cable The Cable is supplied NON-STERILE. It is reusable if cleaned and sterilized prior to each use.

Cleaning and Sterilization

To prevent entry of water into connectors during cleaning, secure the protective caps over the Cable connectors. The protective caps should fit snugly over the Cable connector. If protective caps are loose, ensure that the O-rings are positioned within the grooves of Cable connectors. Replacement O-rings are available through ArthroCare. Wipe down the Cable with a mild detergent solution using a soft brush or sponge to remove any gross contaminants. Rinse under running water to remove any cleaning residue. **DO NOT** immerse in water or any other solution. Remove the caps from the Cable connectors and inspect the Cable for cuts or nicks. **DO NOT** reuse if damaged. Sterilize the clean Cable by following one of the recommended methods, below.

Pre-Vacuum Steam Sterilization

If the pre-vacuum steam sterilizer has a prefixed cycle, use the "Hard Goods" cycle. If it does not have a prefixed cycle, the following parameters are recommended:

- Set temperature at 270 – 272° F (132 – 133°C).
- Set exposure time for 10 minutes for wrapped Cables.
- Set exposure time for 4 minutes for unwrapped Cables.
- Set drying time for 5 minutes minimum.

Gravity Displacement Steam Sterilization

The following parameters are recommended for gravity displacement steam sterilization:

- Set temperature at 270 – 272°F (132 – 133°C).
- Set exposure time for 15 minutes for wrapped Cables.
- Set exposure time for 10 minutes for unwrapped Cables.
- Set drying time for a minimum of 8 minutes.

OR

- Set temperature at 250 – 254° F (121 – 123°C).
- Set exposure time to 35 minutes for wrapped or unwrapped Cables.
- Set drying time for a minimum of 8 minutes.

CAUTION: Failure to properly clean the Cable may lead to inadequate decontamination.

CAUTION: To insure adequate sterilization, make sure that the protective caps do not cover the Cable connectors during sterilization.

CAUTION: Make sure Cables are thoroughly dry before use. Wet Cables may damage the Cables and Controller.

CAUTION: The recommended sterilization parameters are only valid with sterilization equipment that is properly maintained and calibrated.

